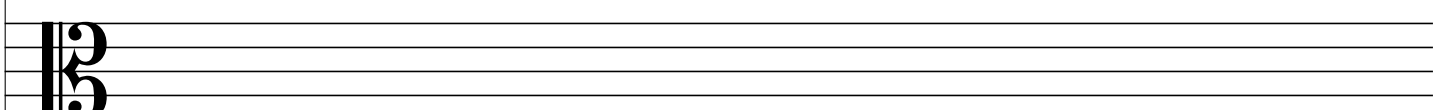
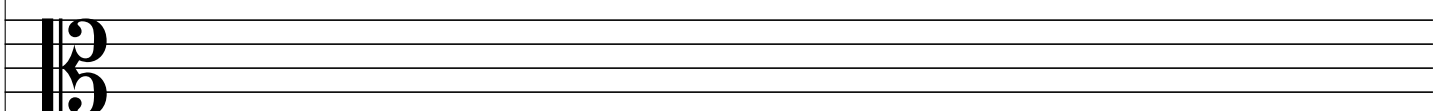
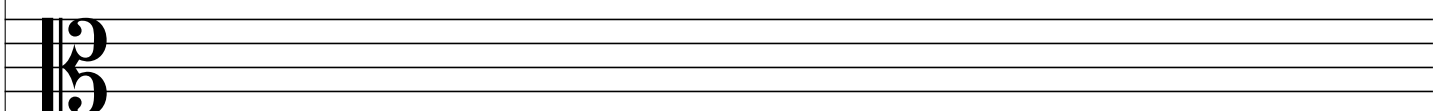
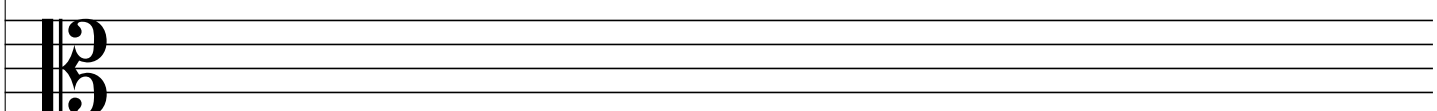
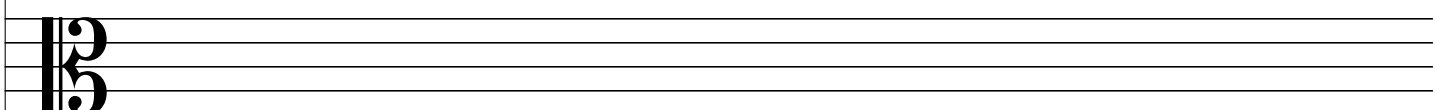
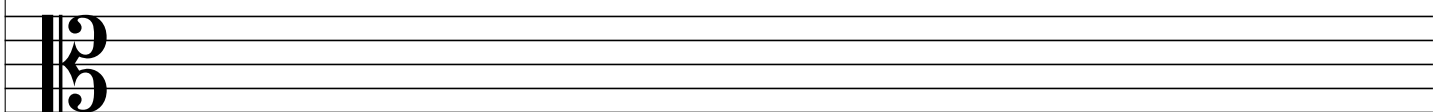
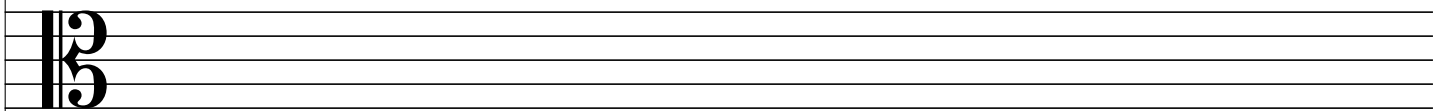
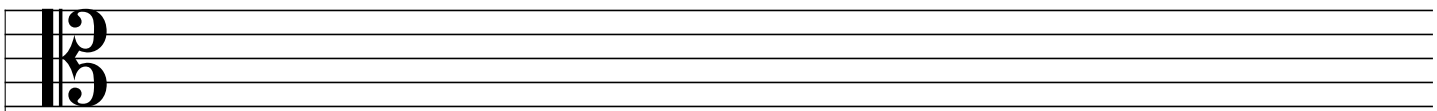


This image shows a blank sheet of music paper with ten staves. Each staff is a five-line musical staff. The first staff on the left of each row is marked with a treble clef (C-clef on the first line) and a 3/4 time signature. The remaining two staves in each row are blank. The staves are arranged in a vertical column, with ten rows in total. The paper is otherwise blank, with no notes or other markings.

This image shows a blank sheet of music paper with eight horizontal staves. Each staff is a five-line system. At the beginning of each staff, there is a treble clef (C-clef) positioned on the first line. The rest of the page is empty, with no notes or other markings.



<b>B</b>		

<b>B</b>		

<b>B</b>		

<b>B</b>		

<b>B</b>		

<b>B</b>		

<b>B</b>		

<b>B</b>		